



CITIZENS
FOR GOOD
DESIGN

2-90 Lisgar Street

Community Consultation Meeting

City of Toronto / Baywood Homes / Page+Steele Architects

Prepared for Active 18 Association by:

Graham Caswell, Michelle Gay, Netami Stuart, Steven Wood



Site and Context

- **These are the questions you should be asking yourself**
- How does it relate to the park?
- Does it welcome?
- How does it feel?
- Do you think this
- How can we balance the interest of the people that live there with the people who live in the community and the neighbourhood?
- The park makes the community / The community makes the park
- There's nothing bad about a good park. Business wins. Community wins. Residents win.

- **When's the next meeting?**
When can we talk more about the design?

- **WE WANT**

- To go beyond the past process
- Three meeting July August September with Planning, Developer, and Community
- A18 in the room for all 3 meetings
- Artistic elements within the face



Site Plan



Context: Site view from Queen Street



Context: Site view from Queen Street



HIGH PARK
147 HECTARES



TRINITY BELLWOODS PARK
16 HECTARES



MUSIC GARDEN
1.5 HECTARES

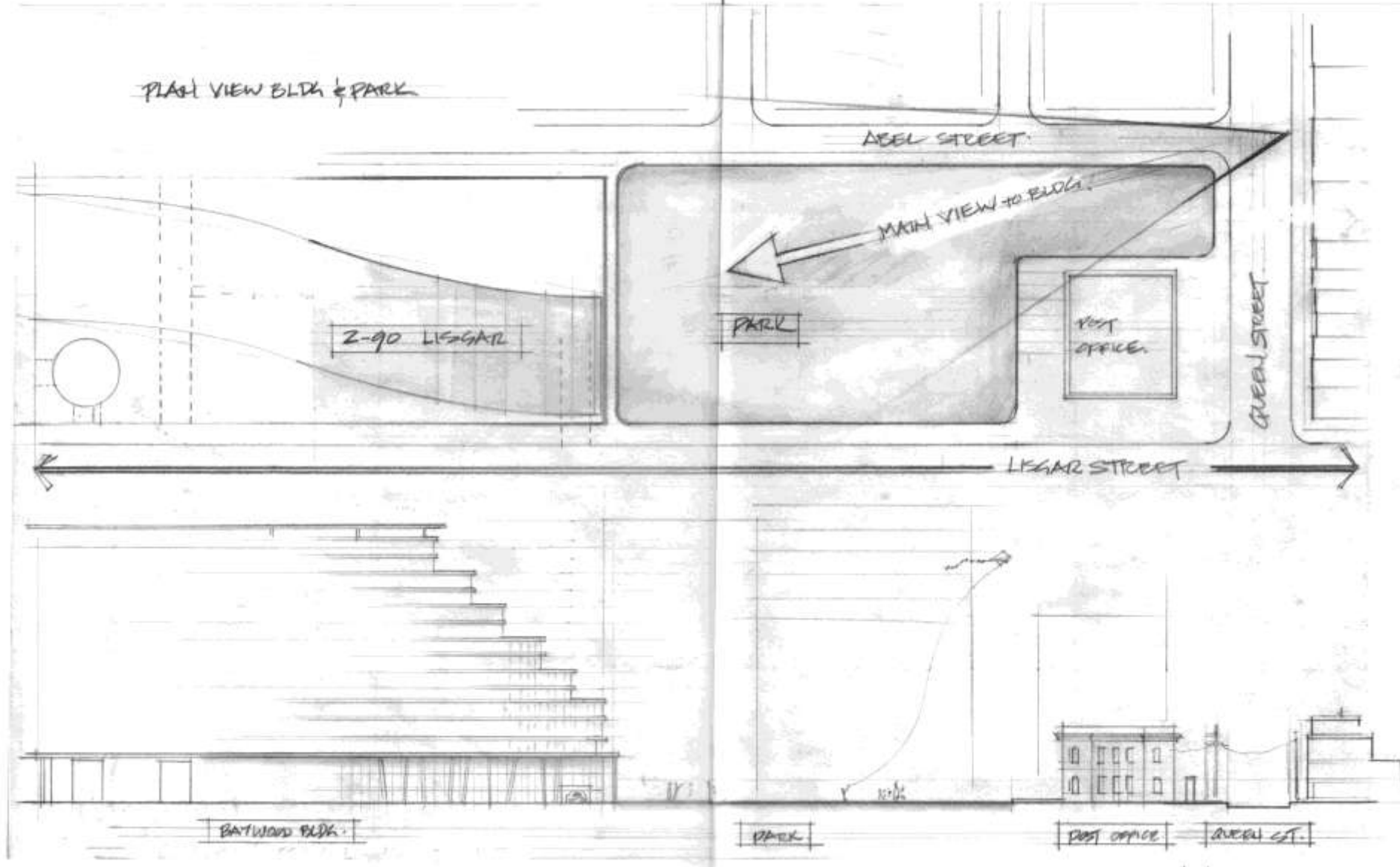


WEST QUEEN WEST PARK
0.5 HECTARES

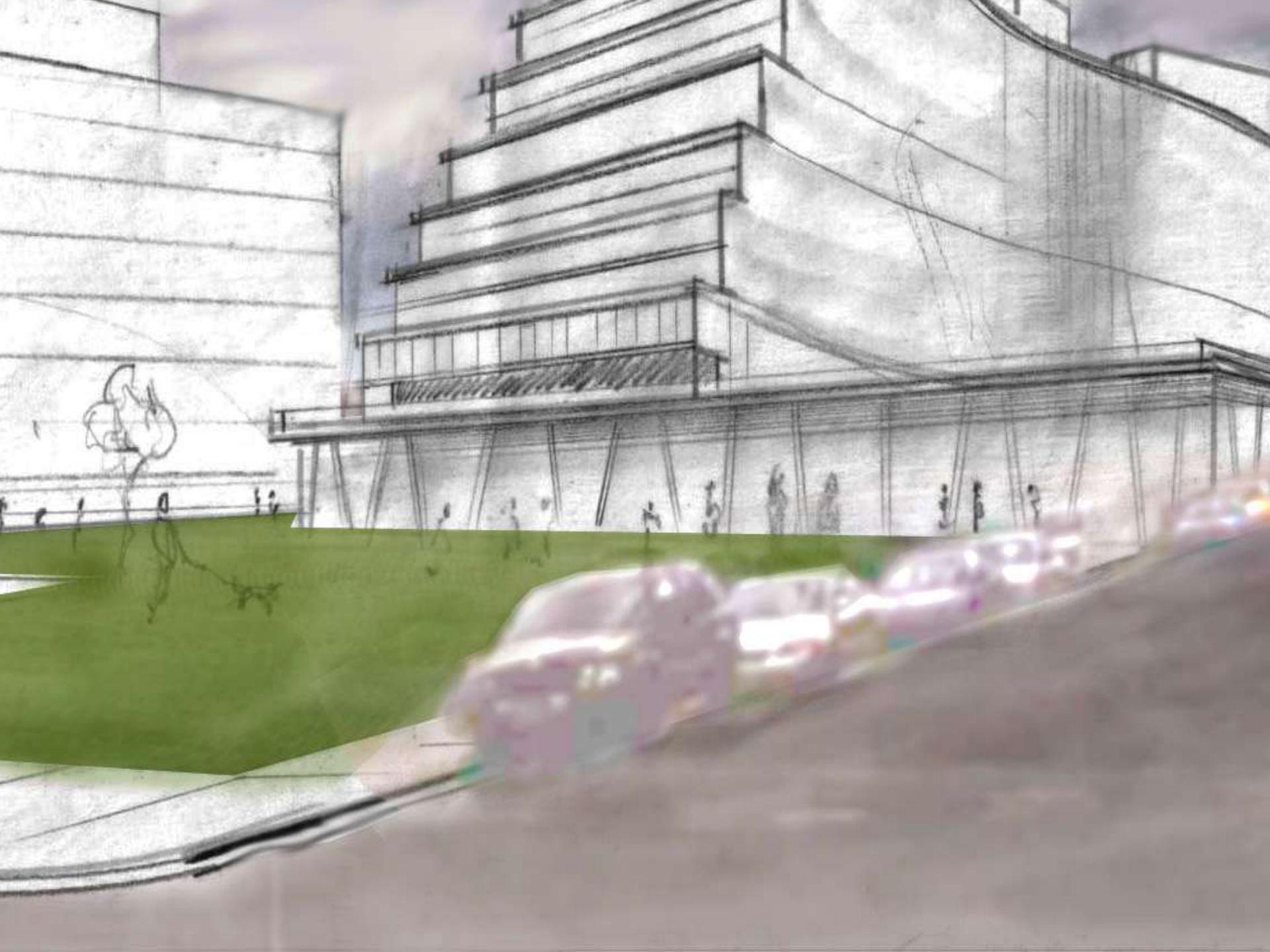


YORKVILLE PARK
0.3 HECTARES

The building will be experienced at two scales



The bulding has 2 vantage points

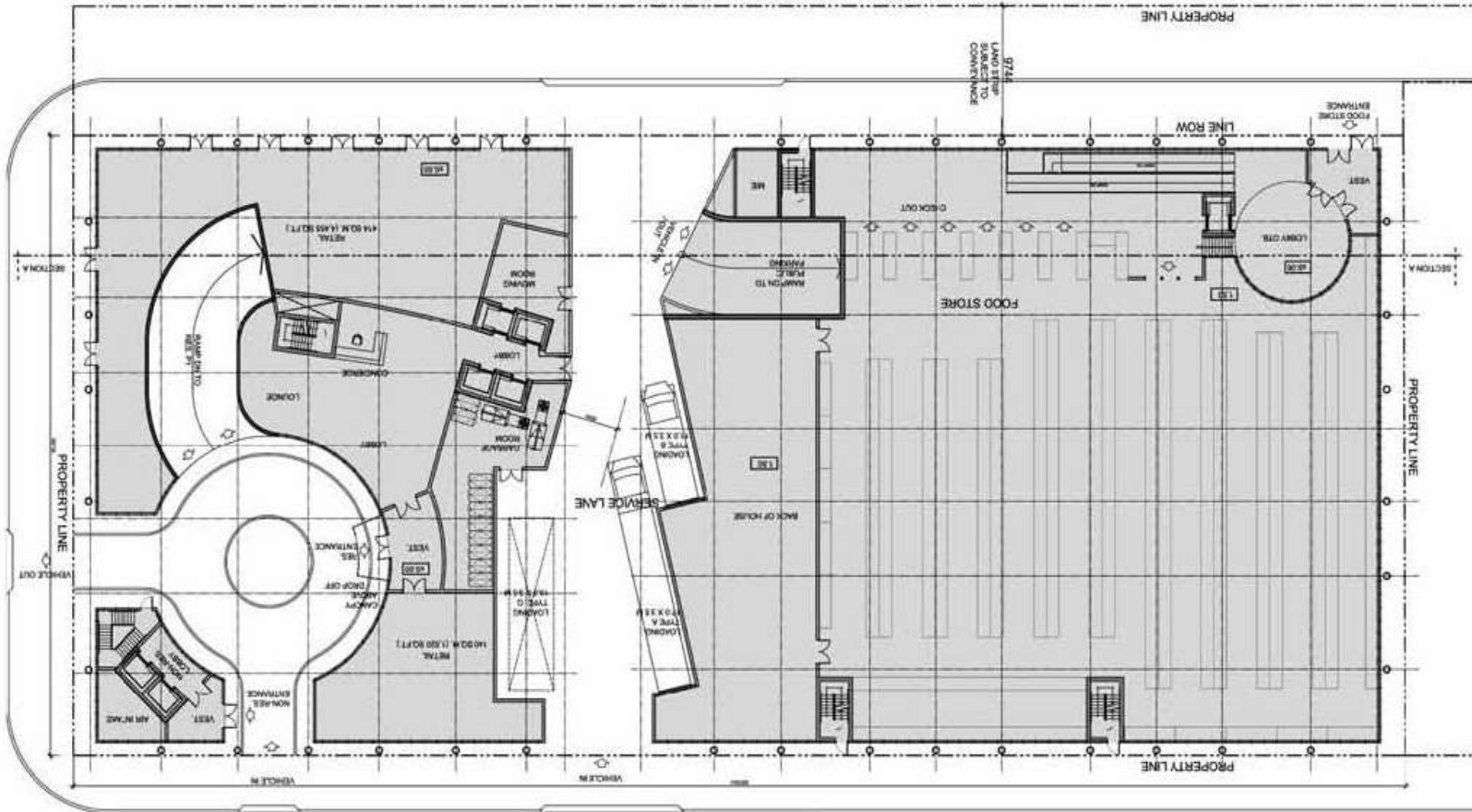


The building has **2** addresses

SUDBURY STREET

ABELL STREET EXTENSION

PARK LAND



LISGAR STREET

Site Plan

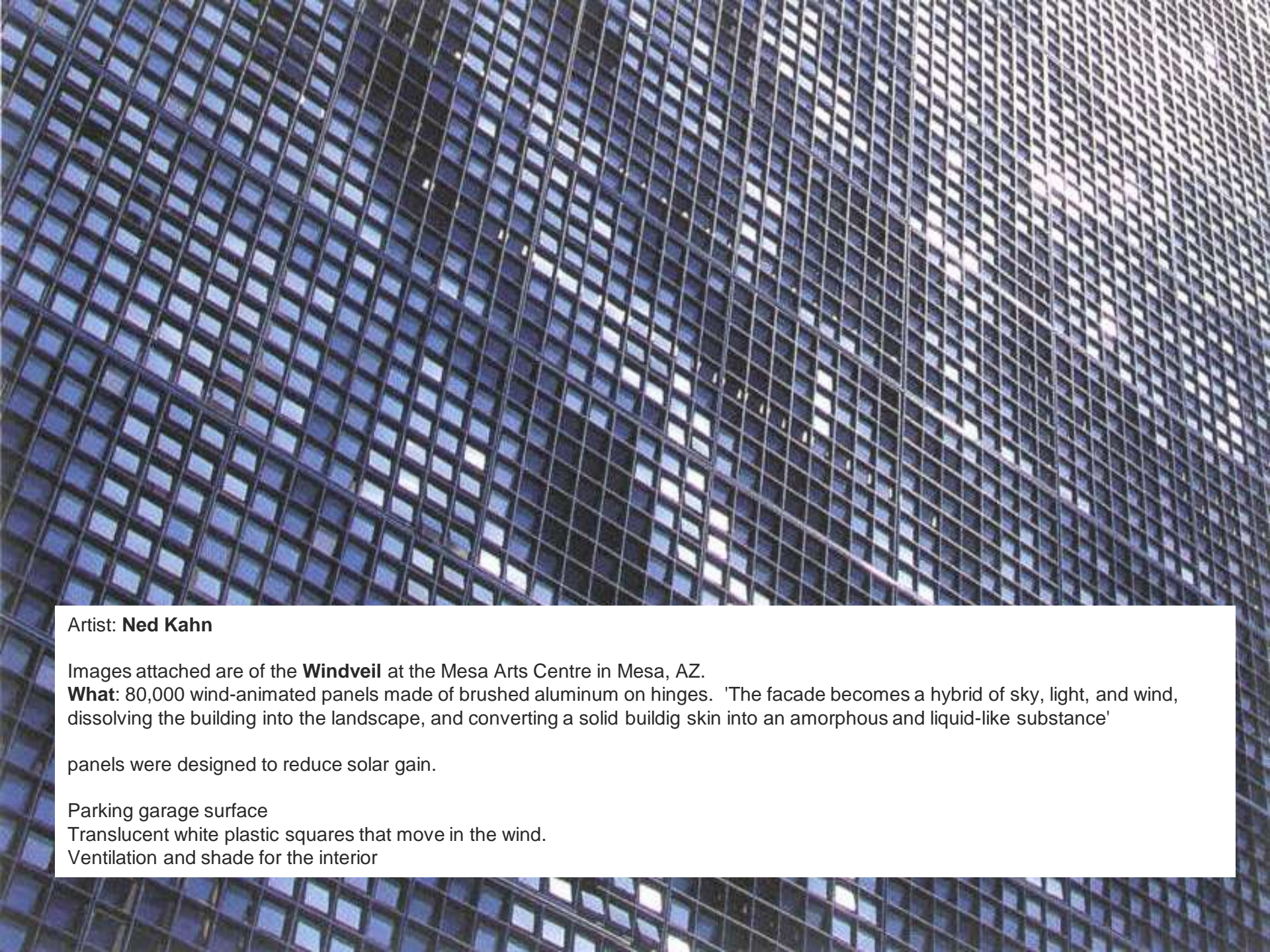
Applicant's Submitted Drawing

Not to Scale
04/03/08

2-90 Lisgar Street

File # 07_268078

The building is the largest sculpture in the park



Artist: **Ned Kahn**

Images attached are of the **Windveil** at the Mesa Arts Centre in Mesa, AZ.

What: 80,000 wind-animated panels made of brushed aluminum on hinges. 'The facade becomes a hybrid of sky, light, and wind, dissolving the building into the landscape, and converting a solid buildig skin into an amorphous and liquid-like substance'

panels were designed to reduce solar gain.

Parking garage surface

Translucent white plastic squares that move in the wind.

Ventilation and shade for the interior





Barcelona: Canopy and interface to public space



Gaudí

We have the opportunity to involve an artist

- Creative vision can be applied to all details including functional elements
- Lights and fixtures
- Surface treatments
- Functional elements



John Dickson







Schoubergplein, Rotterdam, NL



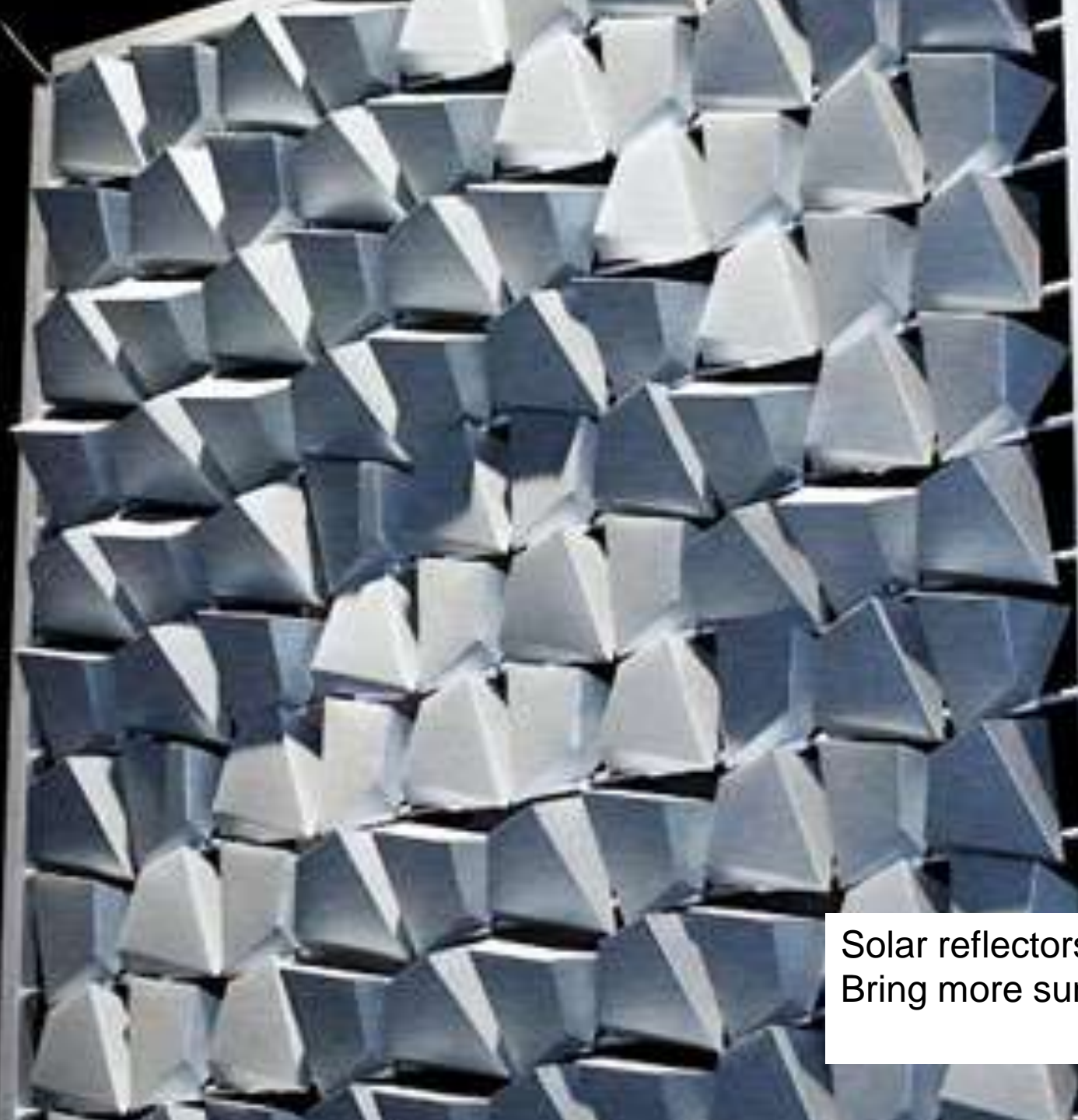




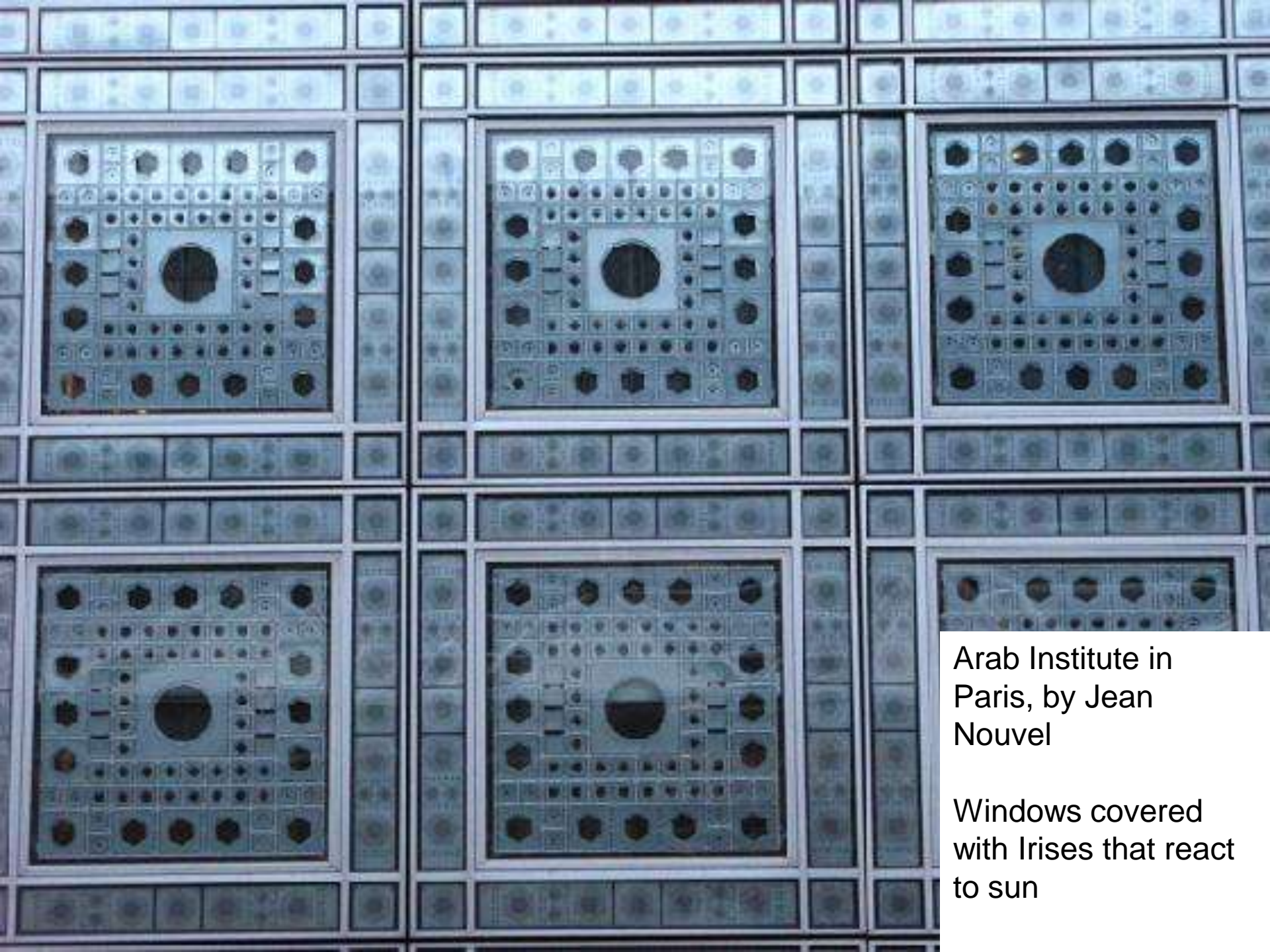
The building needs to animate the park



Millennium Park, Chicago
Array of video screens



Solar reflectors
Bring more sun into the park!



Arab Institute in
Paris, by Jean
Nouvel

Windows covered
with Irises that react
to sun





The building is a critical component of the park













Herzog & De Meuron
Caixa, Madrid
Moss grows on the north
side of walls





Zurich



Simply a beautiful space to BE!
Residents deserve this...!

There are ideas here that can be taken further



Book Trees

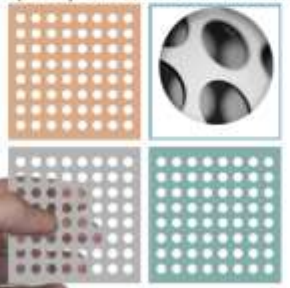
book sculpture as projection screening surface after dark

LISGAR SITE - BAYWOOD, B

tree books. a whimsical sculpture grove where the books can be used projection surfaces.
Suggestion and sketch by Michelle Gay



material sample: punched metal screen



Balconies treated with a perforated metal screen
Seen from afar it creates a collage of building and forest
Suggestion / Sketch by Michelle Gay.

BUILDING BECOMES SCULPTURAL AND FUNCTIONAL AS IT CONNECTS TO THE PARK.

ART TREATMENT BLDG.

PORCH/PAVILION

PARK ELEMENTS - TO QUEEN ST.

1

2

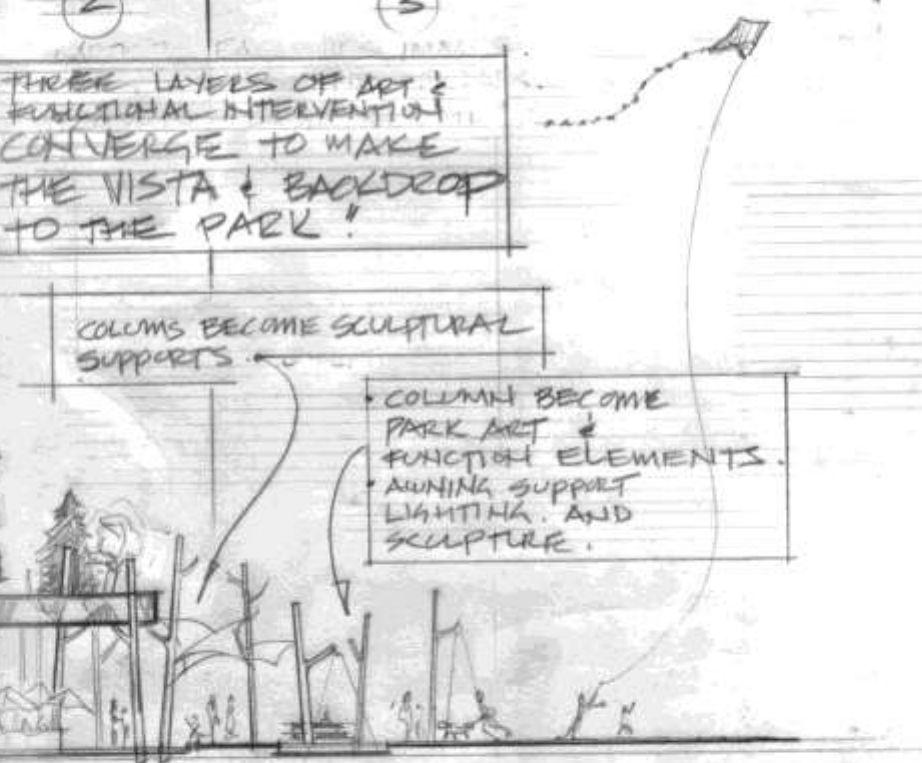
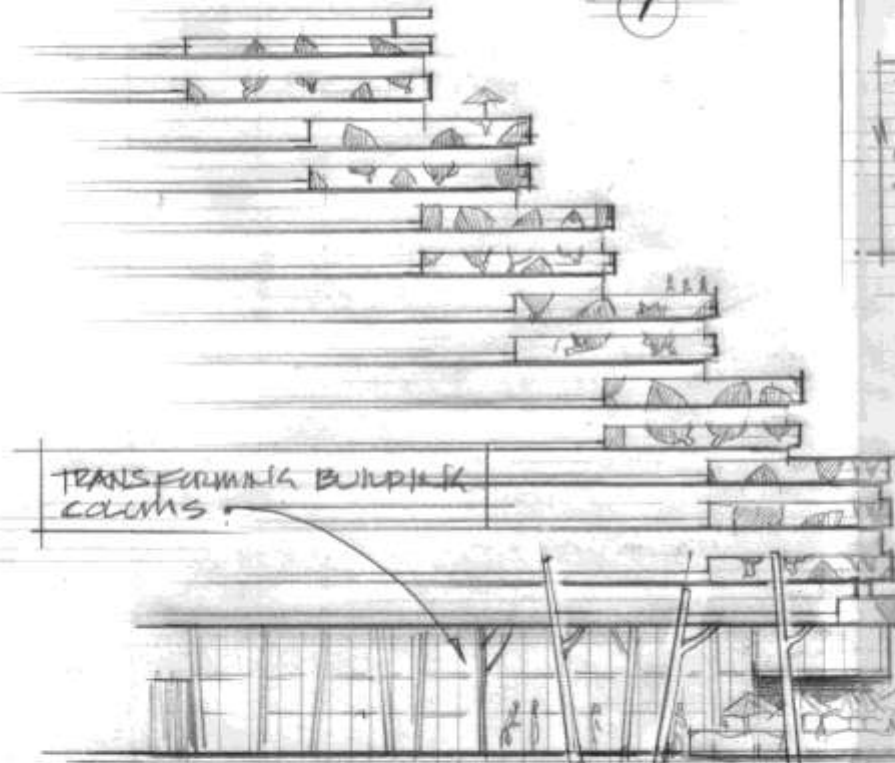
3

THREE LAYERS OF ART & FUNCTIONAL INTERVENTION CONVERGE TO MAKE THE VISTA & BACKDROP TO THE PARK!

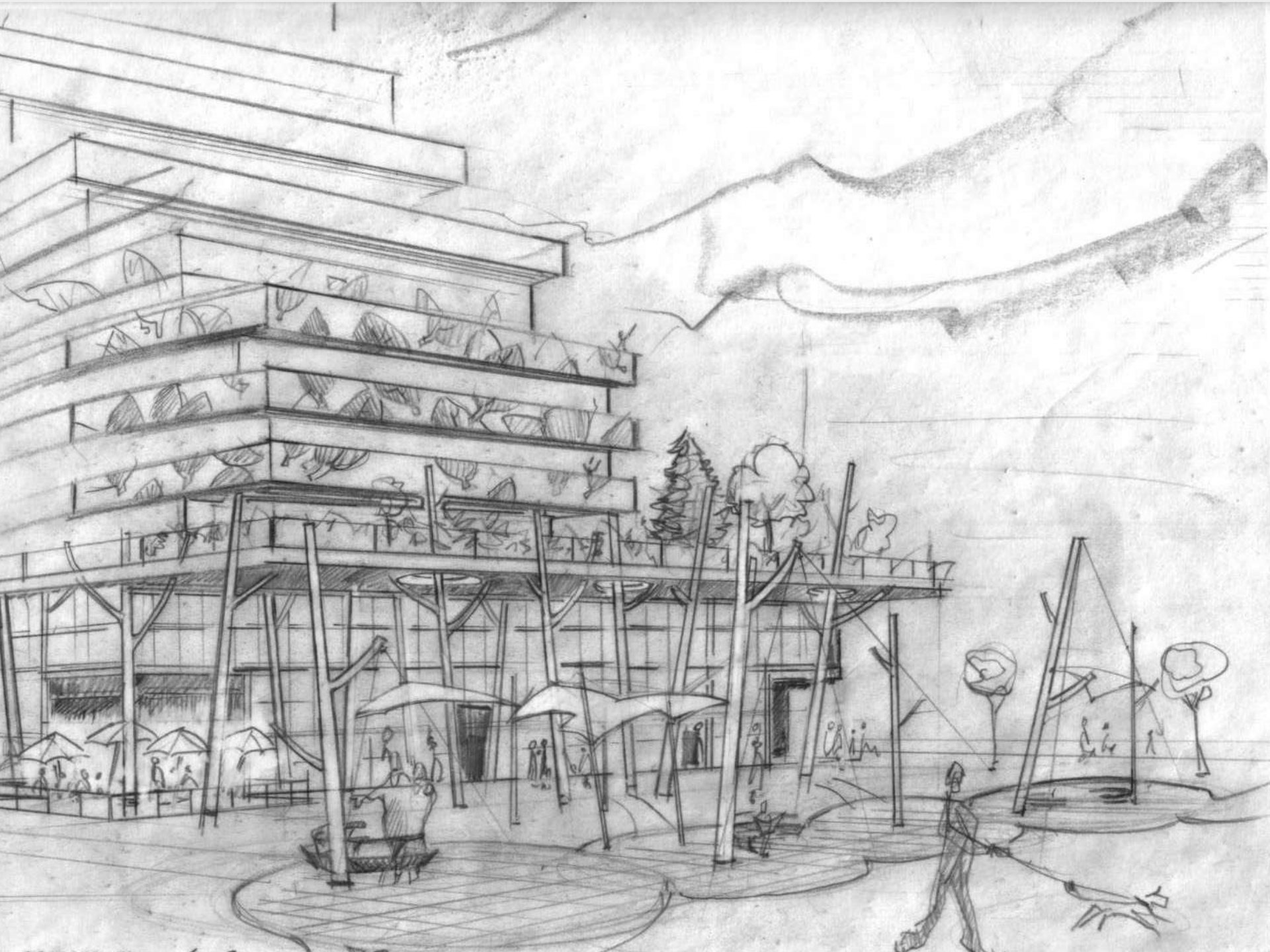
COLUMNS BECOME SCULPTURAL SUPPORTS

COLUMNS BECOME PARK ART & FUNCTIONAL ELEMENTS. AWNING SUPPORT LIGHTING, AND SCULPTURE.

TRANSFORMING BUILDING COLUMNS



Three zones
Treatment on the façade of the building
Interface between the building and the park :
Concepts break free from the structure and extend into the park becoming both functional and sculptural in a seamless transformation



- How does this building complement the park?
- What will it look like from Queen Street?
- Where should the front door be?
- What do people like?
- Where is it nice to be?

